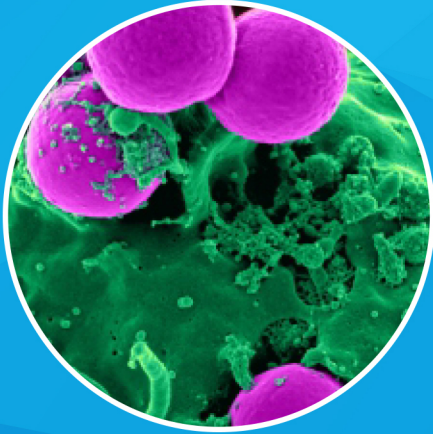


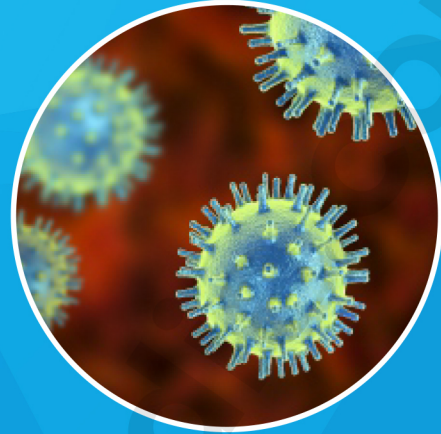
Did You Know:



10 million

The typical office worker comes into contact with

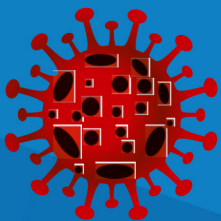
10 million bacteria per day



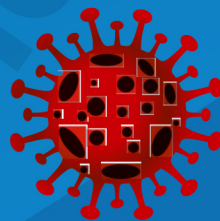
7 hours

ONE bacterium multiplies to over **2 million** in 7 hours.

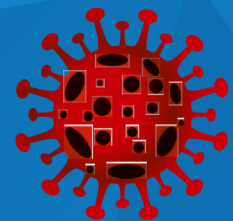
Now imagine the problems with touching retail keypads...



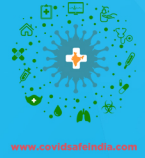
Potentially hundreds of strangers touching the same surface every hour.



Unable to account for the cleanliness of the people who touched the surface before you.



Unable to determine if a person who's sick used the same surface.



www.covidsafeindia.com

EHF - 001 BRASS DOOR OPENER



**NOW
AVAILABLE**



+91 9810301515

PRICE AVAILABLE ON REQUEST

Please note

Just to be clear, we are not making any specific medical claims that the Hygiene will cure, treat, or in itself prevent anyone from being infected with the coronaviruses or other pathogens.

We are stating the fact from a lot of published research that copper and its alloy (such as brass) are inherently antimicrobial where viruses will naturally be unable to thrive and we are suggesting where viruses will naturally be unable to thrive and we are suggesting the Hygiene Hand as a tool to help avoid direct contact with shared surfaces such as door handles, touch screens and buttons for elevators and point of sale terminals.

We would still recommend wiping down the Hygiene Hand after use and of course nothing can replace the practice of solid hand-washing and social distancing in the spread of the Coronaviruses.

- Mumbai • Ahmedabad • Baroda • Bengaluru • Chennai • Surat • Hyderabad •
- Jaipur • Jodhpur • Kochi • Pune • Raipur • Rajkot •



JEEVAN JAGGA(CEO)

+91 9810301515

jeevan@covidsafeindia.com

www.covidsafeindia.com